



GOOD MORNING
Have Good Trading Day

FRIDAY



Price is what you pay.
Value is what you get.

- Warren Buffet



MARKET PULSE

INDIAN INDICES

NAME	CMP	NET CH.	%
SENSEX	27430	-96	-0.35
NIFTY	8484	-29	-0.34

INDIAN ADR'S

SYMBOL	CLOSE	GAIN/ LOSS %
DRREDDY	46.56	-4.08
HDFCBANK	69.38	-0.90
ICICIBK	8.14	-0.12
INFY	14.96	-1.32
TATAMOTOR	37.79	-0.18
WIPRO	9.41	-1.57

FII AND MF ACTIVITY

SYMBOL	In Crs.
FIIs Eq (Provisional)	-706.77
FIIs Index Future	-416.17
FIIs Index Options	1159.98
FIIs Stock Future	-338.65
FIIs Stock Options	15.40
DII's Eq (Provisional)	534.98

CURRENCY

RBI RATE	03-NOV-2016
RUPEE - \$	66.6942
EURO	74.1506
YEN 100	64.9500
GBP	82.2473

MARKET PULSE

GLOBAL INDICES

NAME	CMP	NET CH.	%
DOW	17930	-28	-0.16
NASDAQ	5048	-47	-0.92
NIKKEI	16874	-260	-1.52
HANG SENG	22672	-11	-0.05
SGX NIFTY	8492	-26	-0.31

WORLD COMMODITIES

FUTURE	U\$\$	CHANGES
CRUDE	44.77	+0.11
NATURAL GAS	2.810	+0.041
GOLD	1301.4	-1.9
SILVER	18.285	-0.131
COPPER	2.2400	-0.0090

WORLD EVENTS

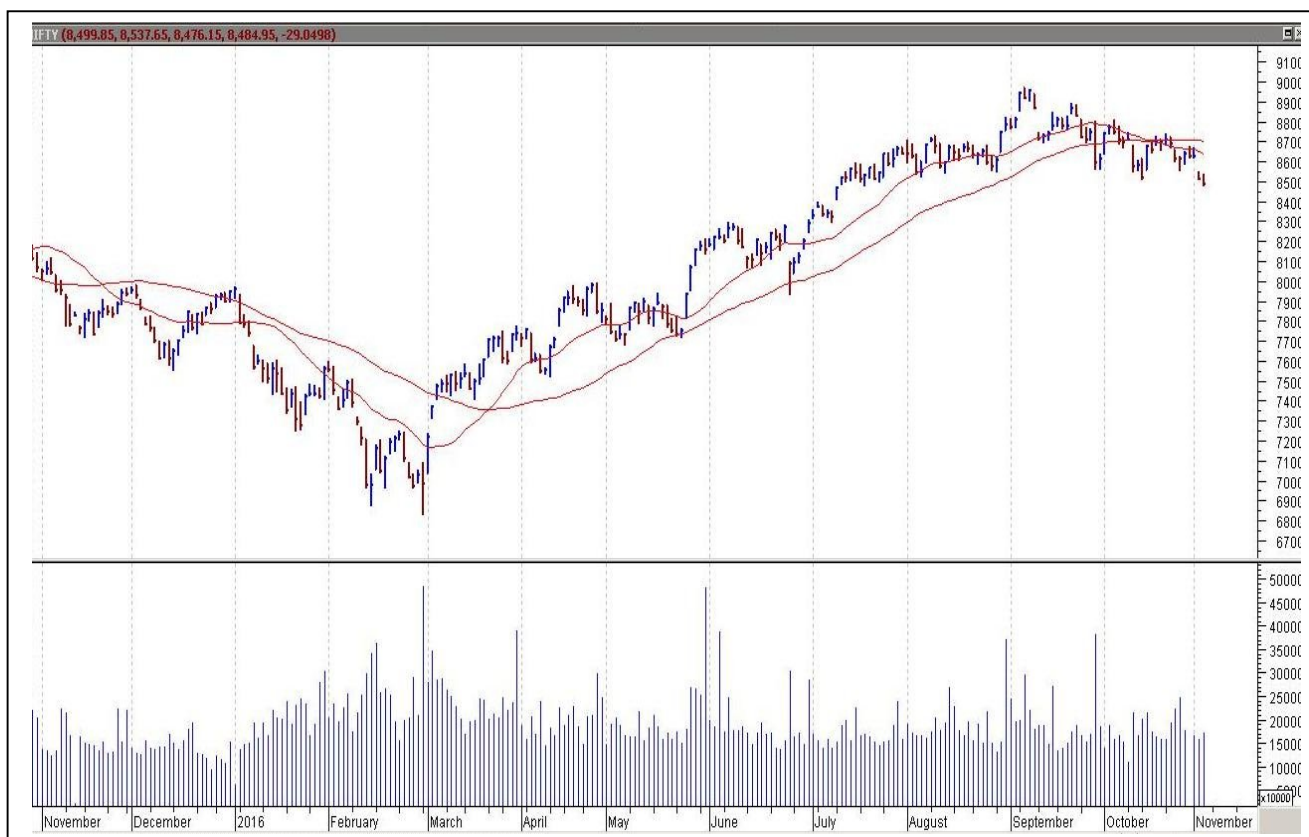
- US: Average Hourly Earnings m/m
- Non-Farm Employment Change
- Unemployment Rate
- UK:MPC Member Forbes Speaks

TOP STORY

- GST Panel fixes rates at 5%, 12%, 18% & 28%. Two Standard Rates Of 12% & 18%. Second Category Decided As 5% Rate Slab.
- SUUTI Holdings Expected To Sell Around 1.5%-3% Stake In L&T Via Block Deal: Sources
- Mylan & Biocon - Insulin Glargine accepted for review by European Medicines Agency
- Glaxo wins battle over GSK trademark
- GVK - Investors like Temasek, CPPB eye 49% in Mumbai airport
- ONGC, Cairn's to face 1922cr service tax on royalty payments
- Tata Motors inks pact with Indonesian PT Pindad to explore market potential of Tata armored vehicles
- HC disallows levy of demurrage charges at DIAI (Delhi airport); operated by GMR
- Parsvnath Developers -Incorporated subsidiary to develop the multi-complex in Hyderabad



NIFTY CHART



MARKET COMMENTARY

Indian benchmark indices extended the sorrow of closing in the red territory for the second consecutive session on Thursday as investors fretted over the rising chances that maverick tycoon Donald Trump could win the US presidency in next Tuesday's election. Trump's provocative stand on key issues like global trade, immigration, outsourcing, internal security, globalization and trade barriers have caused a considerable amount of anxiety among the global business community. For today's trade Nifty likely to trade in the range between 8525 – 8555 in the upper side and 8465 – 8445 in the lower side.

MARKET LEVELS

	CMP	SUPPORT LEVELS				RESISTANCE LEVELS			
NIFTY	8485	8465	8445	8435	8415	8525	8555	8565	8615
USDINR	66.97	66.9	66.8	66.7	66.6	67.1	67.25	67.3	67.35



BULK DEALS (BSE)

SCRIP	CLIENT NAME	BUY/SELL	QUANTITY	PRICE
CUB	HDFC MUTUAL FUND	B	5,248,000	149.2
CUB	RUANE CUNNIF & CO. INC. A/C ACACIA PARTNERS LP	S	4,943,077	149.2
MLKFOOD	THE ROYAL BANK OF SCOTLAND PLC AS TRUSTEE OF JUPITER INDIA FUND	B	44,511	252.92
OFSTECH	VCK SHARE AND STOCK BROKING SERVICES LTD	S	66,000	16.29
REDINGTON	IDFC MUTUAL FUND	S	4,750,000	99.25

BULK DEALS (NSE)

SCRIP	CLIENT NAME	BUY/SELL	QUANTITY	PRICE
ASHIMASYN	ASSET RECONSTRUCTION COMPANY (INDIA) LIMITED	SELL	850000	15.36
CEATLTD	BNP PARIBAS ARBITRAGE	BUY	224274	1228.6
SUNILHITEC	GATSBY MERCHANDISE PRIVATE LIMITED	BUY	175000	427.99
SURANAIND	INDIASTAR (MAURITIUS) LIMITED	SELL	311000	5.19

SCRIP'S IN F&O BAN

(To resume for normal trading below 80% of market wide limit required)

CENTURYTEX, DISHTV, IBREALEST

Initial Public Offering (IPO)

Company Name	Security type	Issue Start Date	Issue End Date	Status
PNB Housing Finance Ltd	Equity	25-Oct-2016	27-Oct-2016	Closed
Varun Beverages Ltd	Equity	26-Oct-2016	28-Oct-2016	Closed



NIFTY 50 STOCKS: SUPPORT & RESISTANCE						
Symbol	Close	Support 1	Support 2	Pivot Point	Resistance1	Resistance2
ACC	1510	1491	1473	1506	1525	1540
ADANI PORTS	288	283	278	292	298	307
AMBUJACEM	243	237	232	241	247	251
ASIANPAINT	1037	1022	1007	1049	1064	1090
AXISBANK	476	473	470	476	479	483
BAJAJ-AUTO	2830	2796	2761	2824	2859	2887
BANKBARODA	147	145	143	148	150	153
BHARTIARTL	309	304	300	310	314	320
BHEL	138	136	135	138	140	141
BOSCHLTD	21510	21322	21133	21598	21787	22063
BPCL	644	635	626	650	658	673
CAIRN	240	236	232	241	246	251
CIPLA	560	556	552	560	564	568
COALINDIA	327	325	322	328	330	334
DRREDDY	3262	3248	3234	3269	3283	3304
GAIL	428	424	419	429	433	438
GRASIM	910	890	871	916	936	962
HCLTECH	763	759	756	764	768	773
HDFC	1402	1394	1387	1403	1410	1419
HDFCBANK	1255	1238	1221	1249	1266	1277
HEROMOTOCO	3379	3332	3286	3367	3413	3447
HINDALCO	163	158	152	162	167	172
HINDUNILVR	839	833	827	841	847	855
ICICIBANK	270	267	264	272	275	280
IDEA	74	73	71	74	75	77
INDUSINDBK	1231	1221	1210	1227	1238	1244
INFY	967	961	954	971	978	988
ITC	240	237	233	240	243	246
KOTAKBANK	806	798	791	805	812	819
LT	1444	1435	1426	1451	1460	1476
LUPIN	1470	1456	1442	1479	1493	1515
M&M	1361	1351	1341	1363	1373	1386
MARUTI	5806	5770	5735	5815	5850	5895
NTPC	153	151	149	154	156	159
ONGC	268	265	263	270	272	277
PNB	133	131	129	135	137	140
POWERGRID	175	174	174	175	176	176
RELIANCE	1024	1018	1012	1026	1032	1041
SBIN	246	243	240	248	251	256
SUNPHARMA	704	697	690	707	714	724
TATAMOTORS	510	503	496	512	519	529
TATAPOWER	77	76	75	77	78	79
TATASTEEL	403	395	386	407	416	428
TCS	2319	2291	2262	2313	2341	2363
TECHM	428	424	420	428	432	436
ULTRACEMCO	3907	3881	3855	3907	3933	3959
VEDL	218	214	210	220	224	230
WIPRO	448	442	437	451	456	465
YESBANK	1209	1178	1146	1221	1253	1296
ZEEL	503	497	492	502	508	513



CORPORATE ACTION / BOARD MEETINGS

NSE Download Ref.No.:NSE/CML/33497:- Suspension of trading in equity shares of Everonn Education Limited(EVERONN) w.e.f. November 04, 2016 (closing hours of trading on November 03, 2016)

NSE Download Ref No: NSE/CML/33554:- Face Value Split – Karur Vysya Bank Limited (KARURVYSYA) from Rs. 10 to Rs. 2 w.e.f. November 17, 2016

BOARD MEETINGS

COMPANY NAME	DATE	PURPOSE	RS. PER SH.
NAUKRI	4-Nov-16	Dividend	1.5
HINDZINC	4-Nov-16	Dividend	1.9
NAVINFUOR	4-Nov-16	Dividend	18.5
HEXAWARE	4-Nov-16	Dividend	1
VEDL	7-Nov-16	Dividend	1.75
AJANTPHARM	7-Nov-16	Dividend	6
BIGBLOC	7-Nov-16	Dividend	0.25
SUPREMEIND	7-Nov-16	Dividend	3
CUPID	8-Nov-16	Dividend	1
COLPAL	8-Nov-16	Dividend	
SHRIRAMCIT	8-Nov-16	Dividend	5
PIIND	8-Nov-16	Dividend	1.5
DCMSHRIRAM	8-Nov-16	Dividend	2.2
KKCL	8-Nov-16	Dividend	9
MRF	8-Nov-16	Dividend	3
SONATSOFTW	9-Nov-16	Dividend	
HARITASEAT	9-Nov-16	Dividend	
TCI	10-Nov-16	Dividend	
GULPOLY	10-Nov-16	Dividend	
STRTECH	10-Nov-16	Dividend	
PPAP	10-Nov-16	Dividend	1.25
SUNCLAYLTD	10-Nov-16	Dividend	

NEWS & RUMOURS:

- Gold (Spot Dollar) major support = \$1276/\$1248 & Resistance = \$1328/\$1362.
- Crude oil range->\$40 to \$50.
- Stocks Fluctuate amid Election Angst; Pound Jumps on BOE, Court: - Stocks fluctuated amid anxiety over the U.S. election as traders awaited jobs data to gauge the strength of the world's largest economy. The pound surged after the Bank of England said it's [no longer](#) expecting to cut interest rates this year.
- Dollar moderately lower vs. rivals, focus turns to NFP report: - The dollar was moderately lower against the other majors currencies on Thursday, hovering close to a three-week trough as uncertainty over the outcome of the U.S. presidential elections continued to weigh and markets turned to Friday's employment report.
- Gold falls back below \$1,300 as dollar, stocks stabilize: - Gold prices fell back below the \$1,300-level during North American hours on Thursday, pulling back from the prior session's one-month high as the U.S. dollar and global stocks stabilized. Prices of the yellow metal touched \$1,309.30 [on Wednesday](#), the most since October 4, as the U.S. dollar and global stock markets were spooked by signs the U.S. presidential election race was tightening less than a week before the November 8 vote.
- U.S. natural gas pushes higher after weekly storage data: - U.S. natural gas futures pushed higher on Thursday morning, after data showed that natural gas supplies in storage in the U.S. rose slightly less than forecast last week. The U.S. Energy Information Administration said in its weekly report that natural gas storage in the U.S. [rose by 54 billion cubic feet](#) in the week ended October 28, just below market expectations for an increase of 56 billion cubic feet.

TRENDS & OUTLOOK – DATE: 04- Nov- 2016

PRECIOUS METALS:

COMMDITY (MCX)	S2	S1	PIVOT POINT	R1	R2
GOLD (Dec)	29910	30160	30445	30760	30966
SILVER (Dec)	41000	42100	43200	44444	45786

BASE METALS

COMMDITY (MCX)	S2	S1	PIVOT POINT	R1	R2
COPPER (Nov)	321	325	330	337	342
ZINC (Nov)	159.10	161.55	164.55	167.45	170.55
LEAD (Nov)	133.45	136.20	138.20	141.75	144.25
NICKEL (Nov)	666	681	699	714	739

ENERGY

COMMDITY (MCX)	S2	S1	PIVOT POINT	R1	R2
CRUDE OIL (Nov)	2770	2890	3006	3094	3175
NATURAL GAS (Nov)	176	180	186	194	199

DATA TALKS : TODAY'S ECONOMIC DATA :

RBA Monetary Policy Statement, Average Hourly Earnings m/m, Non-Farm Employment Change, Unemployment Rate, Trade Balance, MPC Member Forbes Speaks of UK.



LET THE
**WOMAN
POWER RISE**

**WOMEN
DESK**

All the Ladies in the house are
cordially invited to come
& explore their trading talents.

TOLL FREE: 18001030059



Registered Office

Indira House, 3rd Floor, 5 Topiwala Lane,
Opp. Lemington Road Police Station, Grant Road (East), Mumbai - 400007.

Corporate Office

'Ramavat House' E-15, Saket Nagar, Indore - 452018 (M.P.)

Customer Care

Tel: +91-731-4097170/ 71/ 72/ 73/ 74 M. +91 93031 72345

Email: customercare@indiratrade.com www.indiratrade.com



INSTITUTIONAL DEALING UNIT

Africa House, 5, Topiwalla Lane, Lamington Road, Mumbai, 400007

Tel: +91 22 30080678 Fax : +91 22 23870767 Email : ie@indiratrade.com

Disclaimer

This report is for private circulation within the Indira Group. This report is strictly confidential and for information of the selected recipient only and may not be altered in any way, transmitted to, copied or distributed, in part or in whole, to any other person or to the media or reproduced in any form. This report should not be construed as an offer or solicitation to buy or sell any securities or any interest in securities. It does not constitute a personal recommendation or take into account the particular investment objectives, financial situations, or any such factor. The information, opinions estimates and forecasts contained here have been obtained from, or are based upon, sources we believe to be reliable, but no representation of warranty, express or implied, is made by us to their accuracy or completeness. Opinions expressed are our current opinions as of the date appearing on this material only and are subject to change without notice.